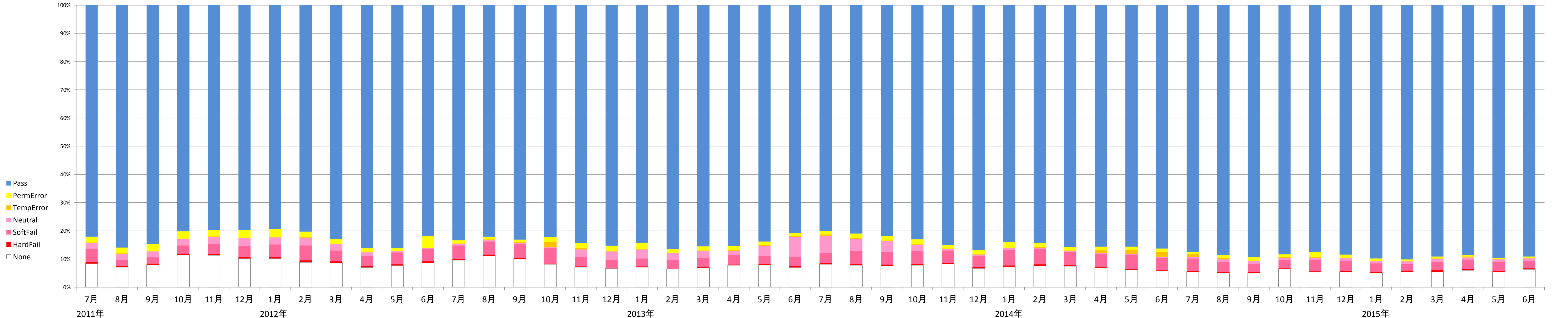


送信ドメイン認証結果の集計(SPF) (2015年6月時点)

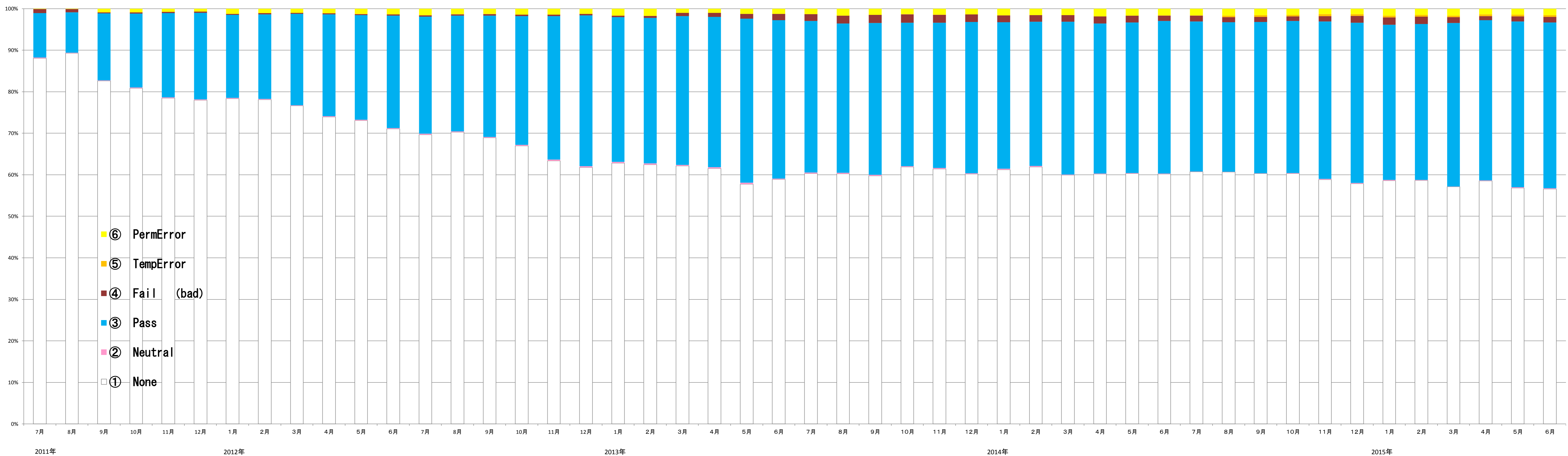
データ提供先数	2011年												2012年												2013年												2014年												2015年					
	7月	8月	9月	10月	11月	12月	1月	2月	3月	4月	5月	6月	7月	8月	9月	10月	11月	12月	1月	2月	3月	4月	5月	6月	7月	8月	9月	10月	11月	12月	1月	2月	3月	4月	5月	6月	7月	8月	9月	10月	11月	12月	1月	2月	3月	4月	5月	6月						
認証結果の割合(①-⑦の名認証結果) / (認証結果総数) (%)																																																						
① None	8.41%	7.11%	7.99%	11.46%	11.35%	10.22%	10.16%	8.80%	8.59%	7.06%	7.70%	8.64%	9.62%	11.13%	10.07%	8.15%	7.12%	6.71%	7.13%	6.39%	6.96%	7.79%	7.84%	7.04%	8.18%	7.76%	7.53%	7.82%	8.31%	6.66%	7.18%	7.58%	7.47%	6.92%	6.21%	5.69%	5.42%	5.10%	5.16%	6.40%	5.40%	5.39%	5.07%	5.47%	5.41%	5.97%	5.39%	6.33%						
② Neutral	2.12%	2.14%	2.06%	2.24%	2.40%	2.63%	2.47%	2.70%	2.26%	1.16%	0.37%	0.43%	0.44%	0.39%	0.33%	0.31%	2.47%	3.14%	3.22%	2.47%	2.45%	1.59%	3.56%	7.08%	6.01%	4.29%	3.85%	2.20%	0.38%	0.55%	0.64%	0.39%	0.21%	0.33%	0.36%	0.28%	0.51%	0.78%	0.90%	0.78%	0.70%	0.93%	0.78%	0.83%	0.84%	0.77%	0.74%	0.82%						
③ Pass	82.11%	85.98%	84.78%	80.15%	79.64%	79.66%	79.42%	80.25%	82.84%	86.23%	86.23%	81.84%	83.37%	82.04%	83.14%	82.20%	84.39%	85.23%	84.24%	86.36%	85.52%	85.35%	83.83%	80.66%	80.11%	80.99%	81.78%	83.04%	85.08%	86.88%	84.04%	84.37%	85.78%	85.63%	85.59%	86.32%	87.43%	88.62%	89.37%	88.37%	87.52%	88.40%	89.84%	90.12%	89.13%	88.58%	89.64%	89.09%						
④ HardFail	0.56%	0.37%	0.38%	0.49%	0.44%	0.60%	0.62%	0.67%	0.57%	0.51%	0.47%	0.50%	0.49%	0.43%	0.34%	0.28%	0.22%	0.16%	0.19%	0.19%	0.21%	0.27%	0.38%	0.49%	0.39%	0.52%	0.51%	0.46%	0.33%	0.42%	0.55%	0.52%	0.36%	0.28%	0.33%	0.30%	0.32%	0.34%	0.30%	0.25%	0.24%	0.32%	0.42%	0.39%	0.70%	0.42%	0.35%	0.33%						
⑤ SoftFail	4.64%	2.22%	2.24%	2.88%	3.52%	3.93%	4.42%	5.40%	3.86%	3.59%	4.19%	4.31%	4.76%	4.68%	5.01%	5.38%	3.56%	2.69%	2.84%	3.05%	3.16%	3.26%	2.92%	3.21%	3.52%	4.58%	4.49%	4.58%	4.43%	3.96%	5.44%	5.52%	4.69%	4.54%	5.05%	4.51%	4.44%	3.66%	2.91%	3.05%	4.08%	3.74%	2.96%	2.43%	2.95%	3.37%	3.34%	2.73%						
⑥ TempError	0.15%	0.12%	0.12%	0.13%	0.27%	0.12%	0.15%	0.28%	0.16%	0.06%	0.10%	0.12%	0.26%	0.33%	0.23%	1.92%	0.58%	0.21%	0.23%	0.18%	0.22%	0.36%	0.43%	0.40%	0.58%	0.38%	0.13%	0.16%	0.30%	0.09%	0.19%	0.33%	0.31%	1.00%	1.35%	1.64%	1.11%	0.37%	0.19%	0.18%	0.10%	0.12%	0.06%	0.30%	0.40%	0.11%	0.08%							
⑦ PermError	2.01%	2.05%	2.42%	2.65%	2.36%	2.83%	2.76%	1.89%	1.72%	1.38%	0.93%	4.16%	1.07%	1.01%	0.88%	1.77%	1.65%	1.85%	2.15%	1.36%	1.48%	1.37%	1.03%	1.13%	1.20%	1.48%	1.69%	1.74%	1.18%	1.44%	1.97%	1.29%	1.17%	1.28%	1.11%	1.25%	0.76%	1.13%	1.18%	0.96%	1.87%	1.11%	0.80%	0.70%	0.68%	0.50%	0.43%	0.62%						



※出典: 電気通信事業者7社の協力により、総務省がとりまとめ

送信ドメイン認証結果の集計(DKIM)(2015年6月時点)

データ提供者数	2011年												2012年												2013年												2014年												2015年					
	7月	8月	9月	10月	11月	12月	1月	2月	3月	4月	5月	6月	7月	8月	9月	10月	11月	12月	1月	2月	3月	4月	5月	6月	7月	8月	9月	10月	11月	12月	1月	2月	3月	4月	5月	6月	7月	8月	9月	10月	11月	12月	1月	2月	3月	4月	5月	6月						
① None no signature	88.08%	89.30%	82.64%	80.86%	78.47%	77.97%	78.34%	78.10%	76.61%	73.95%	73.09%	71.06%	69.64%	70.29%	68.90%	66.98%	63.38%	61.77%	62.81%	62.42%	62.14%	61.49%	57.76%	58.87%	60.31%	60.26%	59.74%	61.91%	61.42%	60.16%	61.22%	61.87%	59.92%	60.17%	60.28%	60.16%	60.71%	60.65%	60.29%	60.29%	58.85%	57.87%	58.61%	58.63%	57.10%	58.52%	56.84%	56.56%						
② Neutral bad format	0.18%	0.13%	0.13%	0.18%	0.19%	0.22%	0.21%	0.17%	0.16%	0.16%	0.19%	0.21%	0.23%	0.19%	0.20%	0.22%	0.29%	0.32%	0.30%	0.35%	0.24%	0.32%	0.31%	0.24%	0.23%	0.21%	0.25%	0.19%	0.20%	0.17%	0.22%	0.28%	0.16%	0.13%	0.13%	0.13%	0.10%	0.08%	0.09%	0.15%	0.16%	0.17%	0.13%	0.11%	0.10%	0.12%	0.15%	0.19%						
③ Pass good	10.70%	9.70%	16.10%	17.76%	20.30%	20.83%	19.97%	20.36%	21.97%	24.50%	25.16%	27.07%	28.25%	27.85%	29.25%	30.99%	34.53%	36.29%	34.86%	35.02%	35.80%	36.19%	39.52%	38.15%	36.53%	35.95%	36.55%	34.49%	34.98%	36.45%	35.33%	34.71%	36.79%	36.14%	36.29%	36.73%	36.11%	36.02%	36.45%	36.59%	37.89%	38.56%	37.41%	37.59%	39.35%	38.60%	39.95%	39.96%						
④ Fail (bad) bad	0.96%	0.81%	0.29%	0.32%	0.32%	0.32%	0.27%	0.30%	0.25%	0.29%	0.29%	0.32%	0.34%	0.37%	0.30%	0.37%	0.35%	0.38%	0.45%	0.84%	0.98%	1.18%	1.48%	1.61%	1.89%	1.95%	2.07%	1.91%	1.83%	1.63%	1.60%	1.57%	1.71%	1.60%	1.29%	1.40%	1.19%	1.21%	1.12%	1.32%	1.67%	1.74%	1.74%	1.41%	1.01%	1.23%	1.35%							
⑤ TempError revoked	0.00%	0.00%	0.00%	0.00%	0.00%	0.00%	0.00%	0.00%	0.03%	0.04%	0.04%	0.02%	0.05%	0.03%	0.04%	0.03%	0.02%	0.01%	0.01%	0.01%	0.01%	0.02%	0.01%	0.01%	0.01%	0.00%	0.01%	0.02%	0.07%	0.01%	0.00%	0.01%	0.00%	0.01%	0.05%	0.06%	0.09%	0.41%	0.38%	0.39%	0.46%	0.43%	0.45%	0.42%	0.39%	0.42%	0.40%	0.38%						
⑥ PermError no key	0.06%	0.06%	0.85%	0.88%	0.72%	0.67%	1.21%	1.07%	0.98%	1.06%	1.23%	1.34%	1.53%	1.32%	1.27%	1.40%	1.41%	1.26%	1.64%	1.75%	0.97%	1.00%	1.21%	1.25%	1.30%	1.68%	1.50%	1.31%	1.43%	1.38%	1.60%	1.54%	1.56%	1.85%	1.65%	1.63%	1.59%	1.65%	1.57%	1.47%	1.32%	1.29%	1.65%	1.51%	1.66%	1.34%	1.43%	1.57%						



※出典：電気通信事業者4社の協力により、総務省がとりまとめ